

# Das Grundmodell der Laute von 1500 bis 1805

## *The basic model of the lute, 1500 to 1805*

### Das Lauten-Stimmwerk im 16. und frühen 17. Jahrhundert

#### *The Lute family in the 16<sup>th</sup> and early 17<sup>th</sup> century*

Die Stimm- und Größenangaben neben dem Instrumentennamen sind Nominalwerte.

*Tuning, pitches and sizes given with the instrument names are nominal.*



#### **Oktav-Laute in g<sup>2</sup>, 33 cm**

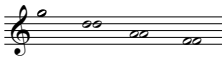
*Descant lute in g<sup>2</sup>, 33 cm*

ca.1600; ca.1547-1635

g<sup>2</sup>; ffe (Vieil ton)

Mensur: 30 cm

nach / *after* W.Eberle, ca.1600  
vgl. S. 78



#### **Diskantlaute in d<sup>2</sup>, 44 cm**

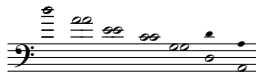
*Treble lute in d<sup>2</sup>, 44 cm*

ca.1600; ca.1547-1635

d<sup>2</sup>; ffeff-f (Vieil ton)

Mensur: 44,2 cm

nach / *after* W.Eberle, ca.1600



#### **Altlaute in a<sup>1</sup>, 58,7 cm**

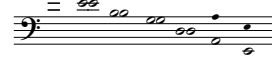
*Alto lute in a<sup>1</sup>, 58.7 cm*

1595; ca.1500-1635

a<sup>1</sup>; ffeff-f (Vieil ton)

Mensur: 57,3 cm

„Presbyter-Laute“, 1595  
S. 86



#### **10-chörige Laute in f<sup>1</sup>**

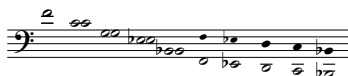
*10-course lute in f<sup>1</sup>*

1620; ca. 1600-1650

f<sup>1</sup>; ffeff-cdfh (Vieil ton) / Accords nouveaux / NAO

Mensur: 67,4 cm

nach / *after* Hans Frei / Dowland 1610



#### **11-chörige Laute in f<sup>1</sup>**

*11-course lute in f<sup>1</sup>*

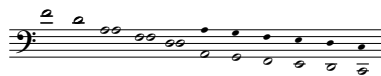
Decke nach 1684; 1638-ca. 1750

f<sup>1</sup>; dfedf-cdfhk = NAO / Accords nouveaux

Mensur: 70,2-70,5 cm

Bologneser (?) Muschel 16. Jh.

S. 154





**Tenorlaute in g<sup>1</sup>, 66 cm**

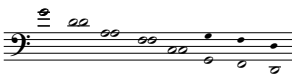
*Tenor lute in g<sup>1</sup>, 66 cm*

1609; ca. 1500-1635

g<sup>1</sup>; ffeff-cd (Vieil ton)

Mensur: 67 cm

nach / after Magno Dieffopruchar 1609, vgl. S. 78



**Kleine Basslaute in e<sup>1</sup>, 78,4 cm**

*Small bass lute in e<sup>1</sup>, 78.4 cm*

?; ca. 1545-1635

e<sup>1</sup>; ffeff-cd (Vieil ton)

Mensur: 78,4 cm

nach / after Venere, o.J. / n.d.



**Groß-Oktav-Basslaute in d<sup>1</sup>, 88 cm**

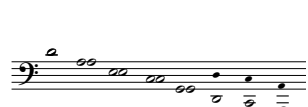
*Bass lute in d<sup>1</sup>, 88 cm*


ca. 1545-1635

d<sup>1</sup>; ffeff-cd (Vieil ton)

Mensur: 94 cm

nach / after Michielle Harton 1602



**Chitarra [italiana]** 

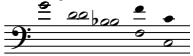
*Chitarra [italiana]*

ca. 1610; ca. 1300-1670?

g<sup>1</sup>; feff

Mensur: 59,5 cm

anonym, S. 90



**Colachon** 

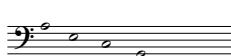
*Colachon*

1688

a; feffc

Mensur: 88,7 cm

J. Schorn S. 158



**Gallichon** 

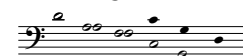
*Gallichon*

1714; 1700-1750

d<sup>1</sup>; feff

Mensur: 79 cm

G.F. Wenger S. 180



**Mandora** 

*Mandora*

1748; 1705-1805

e<sup>1</sup>; feffc / fefff

Mensur: 70 cm

G.F. Wenger, S. 214

