

Vihuela, Viola da mano, Gitarren bis ca. 1800

Vihuela, Viola da mano, guitar until c. 1800



a 6-chörige Viola da mano

6-course Viola da mano



nach / after Girolamo dai Libri um / around 1520;
ca. 1480-1550 (S. 44 / 46)

a¹; ffeff (Vieil ton)

1x1 + 5x2 = 54 cm

b c 6-chörige Vihuela de mano

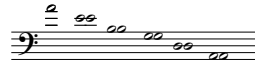
6-course Vihuela de mano



Rekonstruktion / ca. 1625; ca. 1510-1650 (S. 48)

a¹ / e¹; ffeff (Vieil ton)

1x1 + 5x2 = 59 cm / 72 cm



g

d 4-chörige Renaissancegitarre

4-course Renaissance guitar

nach / after Gorlier / Morlaye; ca. 1545-1605

a²: fef (S. 67)

1x1 + 3x2 = 52 cm



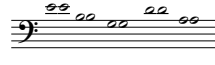
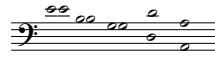
e g 5-chörige Barockgitarre

5-course Baroque guitar

e) L. Pratter 1676 / g) Lambert ca. 1775;
ca. 1600-1800

e¹: feff (S. 150, 234)

1x1 + 4x2 / 5x2 = e) 67 cm / g) 64 cm



h

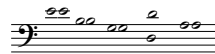
f 5-chörige Chitarra battente

5-course Chitarra battente

M. Sellas, 1641; seit / since ca. 1630

e¹: feff (S. 130)

5x2 = 58 cm



h 6-chörige Gitarre

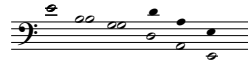
6-course guitar



J. Pages 1822; ca. 1760-1830

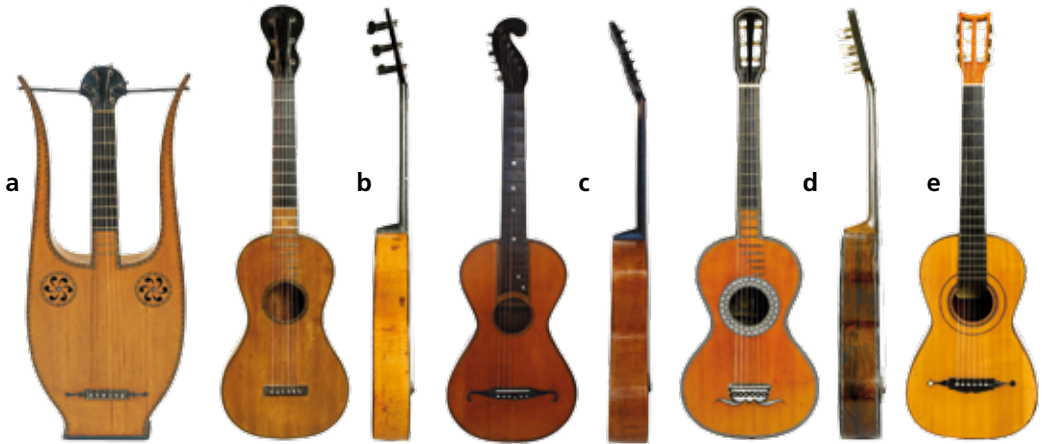
e¹: fefff (S. 260)

1x1 + 5x2 = 64,3 cm



Gitarren ab ca. 1800

Guitars from c. 1800



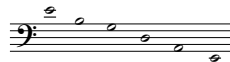
a 6-saitige Lyre-Guitare

6-string Lyre-guitar

Mousset 1800-1825; ca. 1780-1830

e¹; fefff

6x1 = 58,5 cm (S. 252)



b c 6-saitige Gitarre

d e 6-string guitar

f h seit / since ca. 1800

i e¹; fefff

b anonym, ca. 1800,
6x1 = 64,9 cm (S. 250)

c G. Stauffer, Wien nach / after 1825,
6x1 = 63 cm (S. 266)

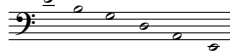
d R. Lacote, Paris 1839,
6x1 = 63 cm (S. 272)

e L. Panormo, London 1847,
6x1 = 63 cm (S. 278)

f C.F. Martin & Schatz, Cherry Hill 1842,
6x1 = 63,25 cm (S. 274)

h A. Torres, Almeria 1892 (Nr. 161),
6x1 = 61,1 cm (S. 292)

i A. Torres, Almeria 1877 (SEU 01),
6x1 = 64,5 cm (S. 292)



g 7-saitige Gitarre

7-string guitar

ca. 1850- ?

e¹; fefff – c

Ch. Valance, Mirecourt ca. 1850 als 6-saitige Gitarre, später umgebaut zur 7-saitigen Gitarre im Coste-Stil / 1850 built as 6-string guitar, later transformed to a 7-string instrument in the Coste-style (S. 284)

6x1 = 62,8 / 1x1 = 70,5 cm

